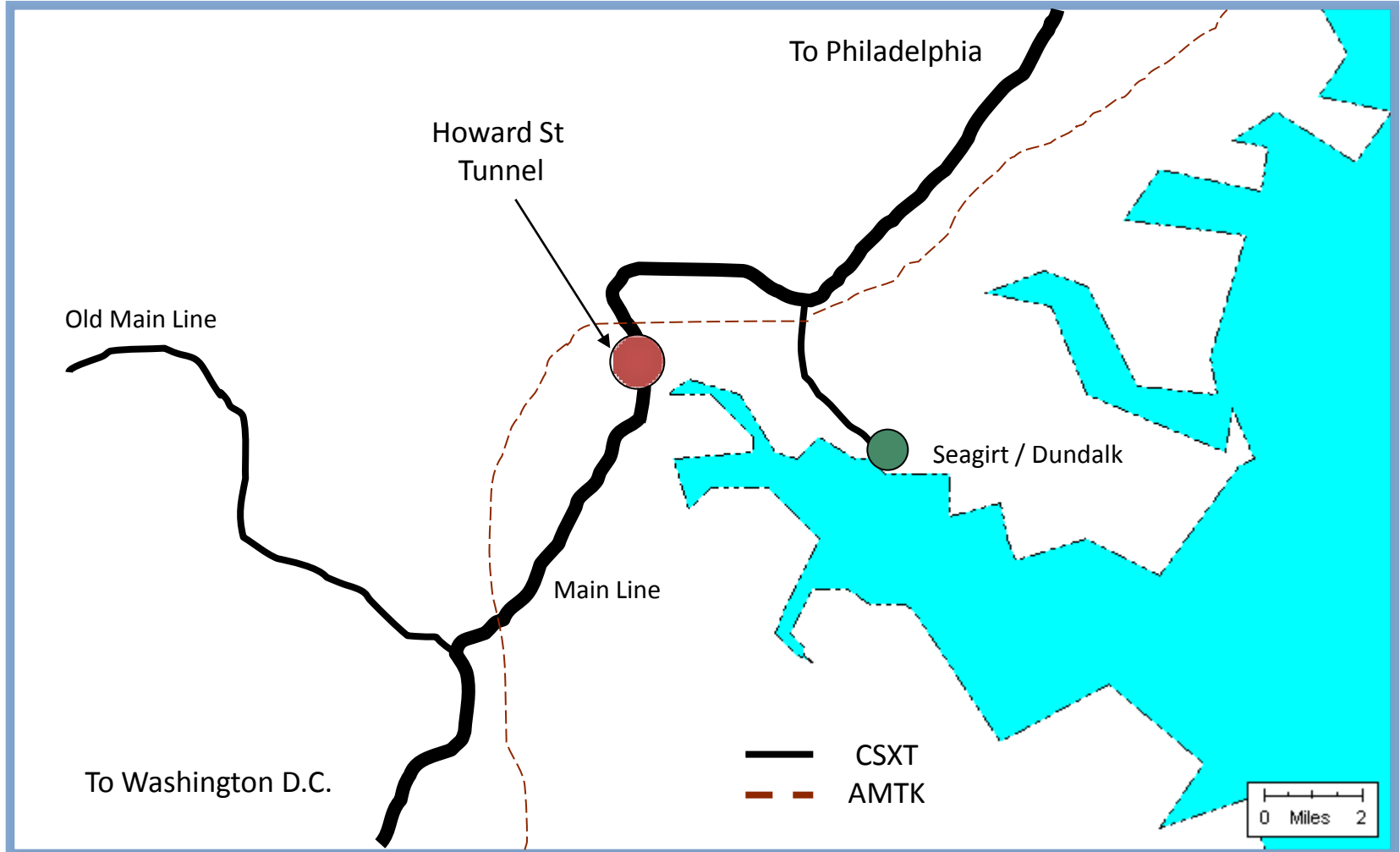


Presentation to the
Anacostia Watershed Restoration Partnership
December 15, 2011

Baltimore-Washington Rail Intermodal Facility

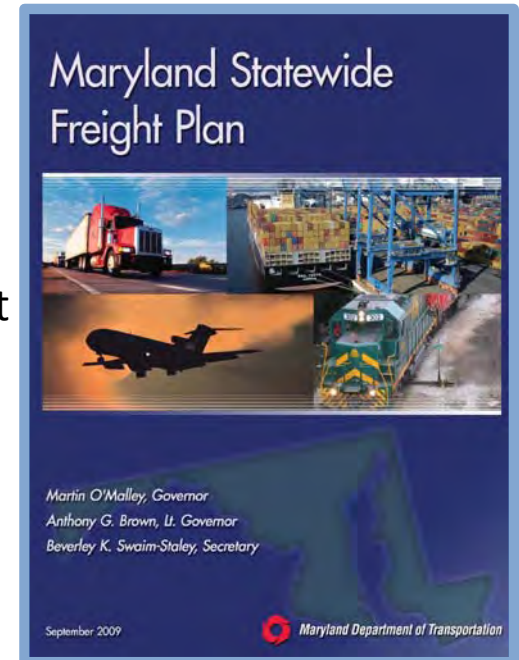


CSX Intermodal Network in the Baltimore-Washington Corridor



Maryland's Statewide Freight Plan

- Maryland's Statewide Freight Plan (2009) found that:
 - Maryland's wealth and population density generates high-consumer demand
 - 5th most densely populated State (5 million in 2009)
 - 6th wealthiest State (per capita income)
 - Baltimore-Washington = 4th largest consumer market
 - Maryland's population and economy will continue to grow and create additional consumer demand
 - Population will grow to 7 million by 2030
 - Freight will increase by 75 percent by 2030
- CSX's relocation from Seagirt received a "high rating" in Statewide Freight Plan due to its larger context.



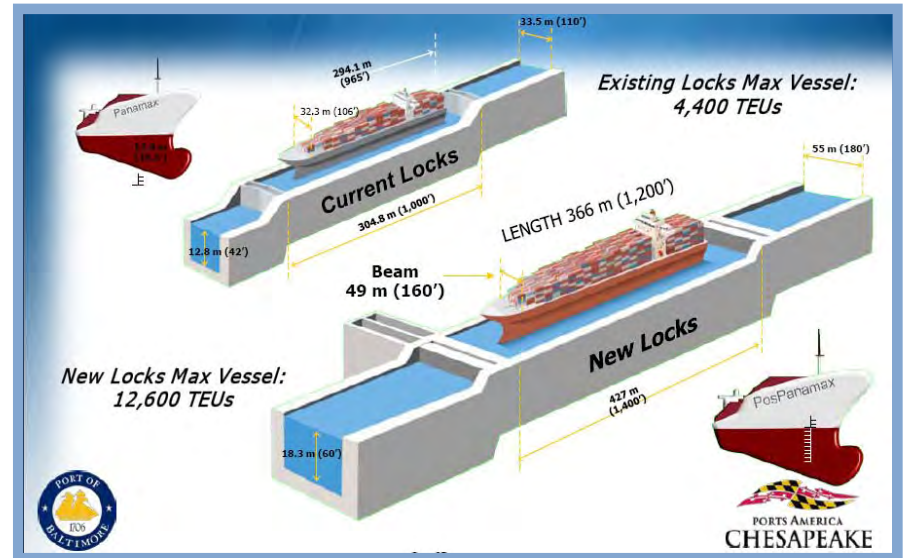
Global Context

- Freight movement is not just a Maryland or U.S. issue—its international.
- Future national and international projects will have an impact on Maryland's freight flow.
- Major freight infrastructure projects
 - Panama Canal expansion
 - Port of Baltimore
 - CSX National Gateway



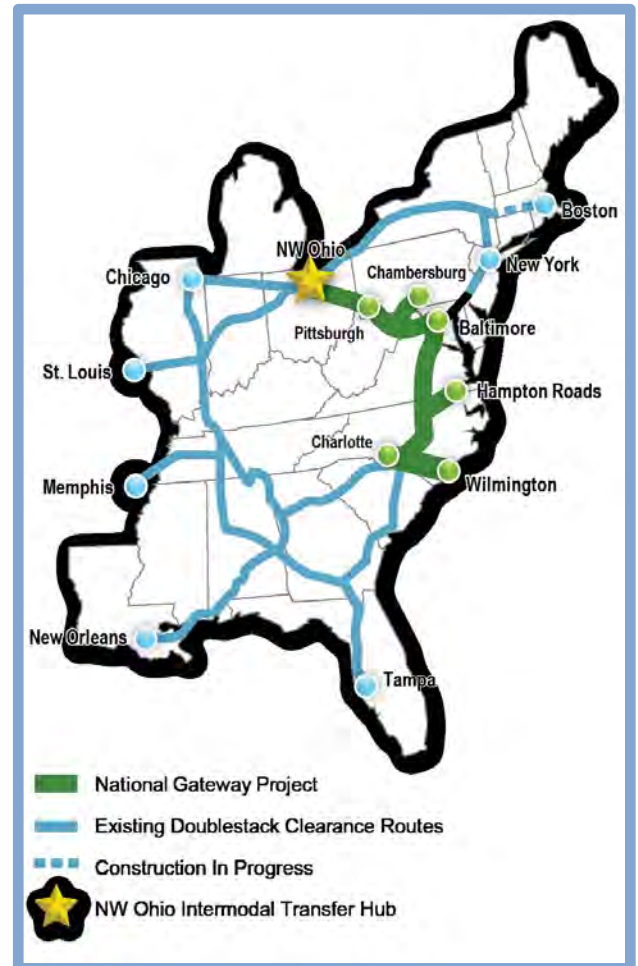
Panama Canal Expansion

- Panama Canal is currently being widened
- When complete in 2014, larger ships originating from Asia will be able to unload on the east coast
- The Port of Baltimore will be one of only two east coast ports that can handle the larger ships at opening



National Gateway

- A public-private partnership between CSX railroad and the States of Ohio, Pennsylvania, West Virginia, Maryland, Virginia, and North Carolina and the District of Columbia
- The purpose of the project is to achieve a minimum of 21 feet of vertical clearance along CSX's rail corridor
 - 61 clearances total, including 10 in Maryland
- Allows operation of double-stacked trains



What is the Baltimore-Washington Rail Intermodal Facility?



Intermodal rail facilities accommodate the transfer of intermodal freight containers between trains and trucks.



❖ Allows Maryland to ship and receive double-stack containers along the National Gateway network.



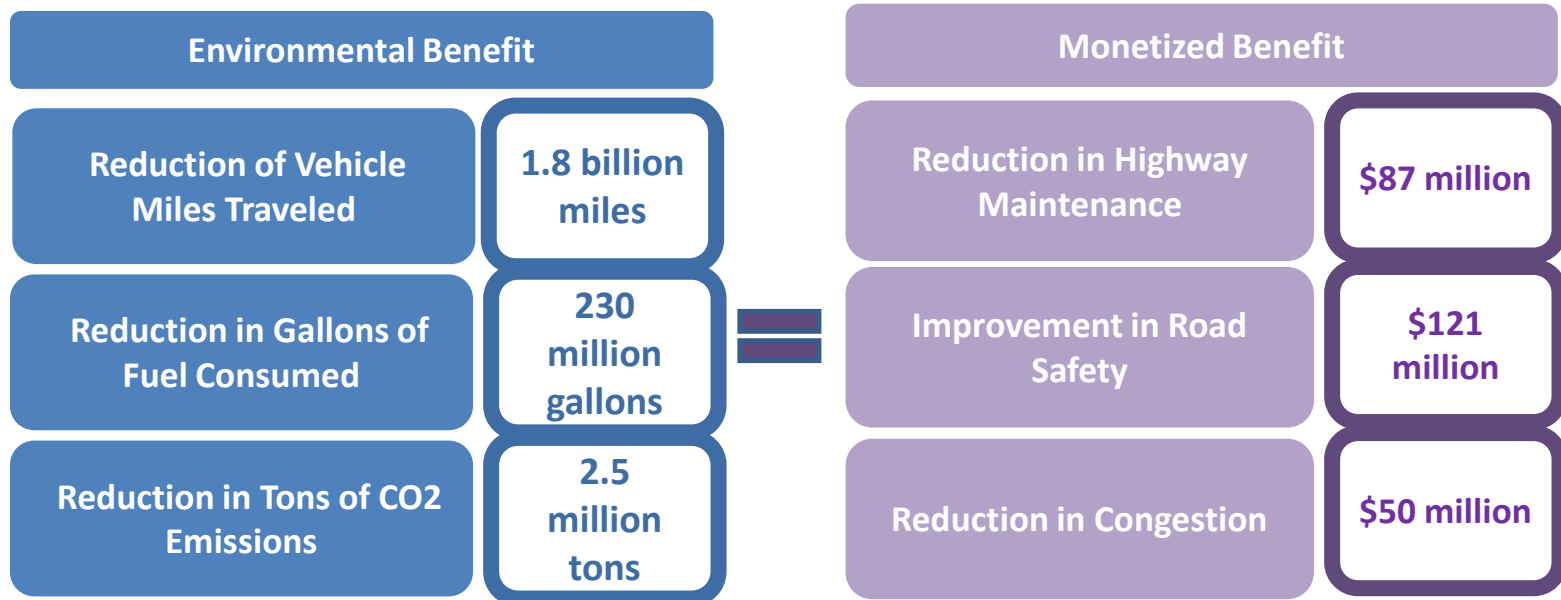
❖ Reduces highway congestion by allowing trucks to focus on local deliveries to warehouses and distribution centers



❖ Provides critical near-dock, single-stack rail connection to the Port of Baltimore

Statewide Environmental Benefits

Environmental benefits will accrue to Maryland as a result of transportation efficiencies in the supply chain.



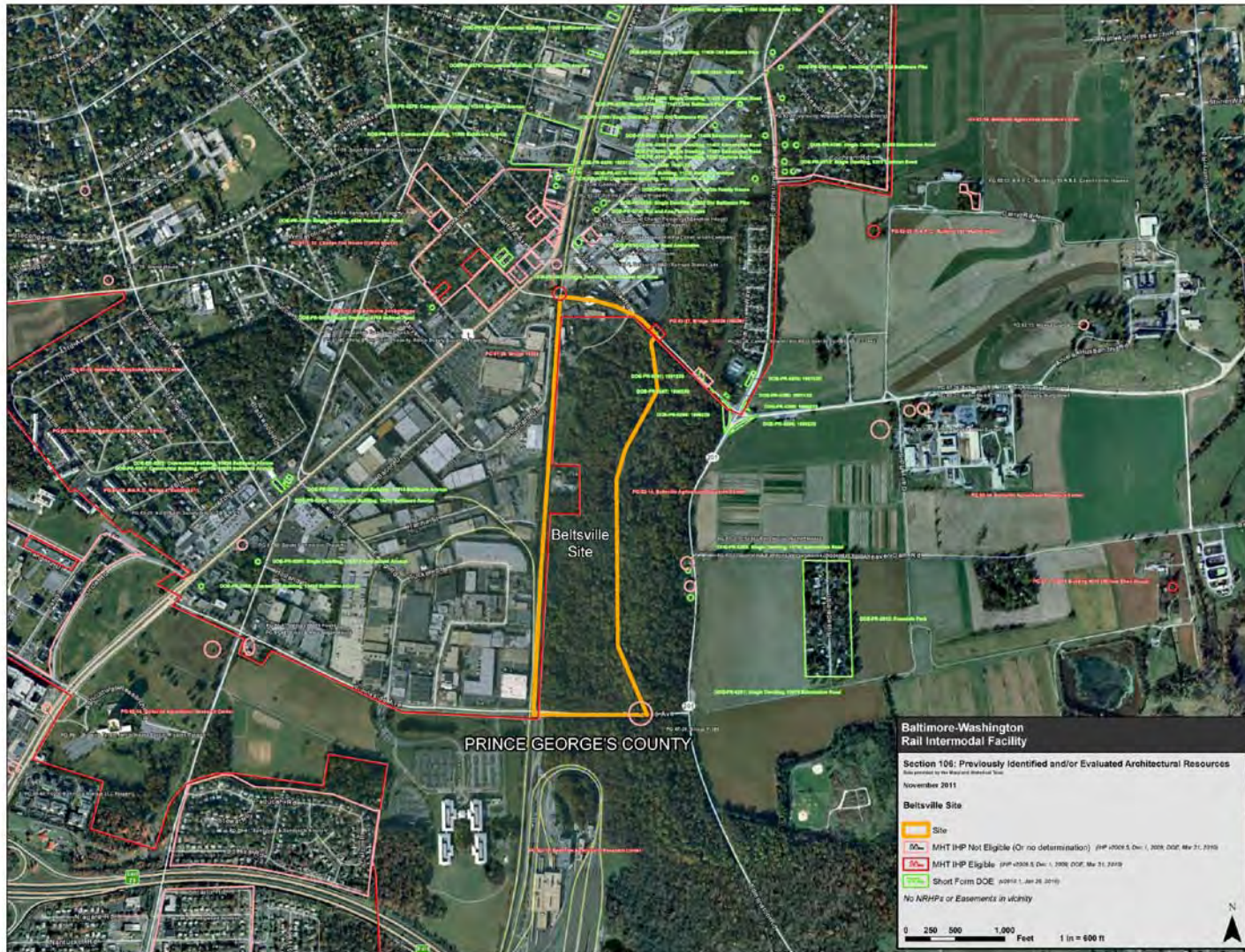
Source: CSX Transportation, CSX Analysis from HDR, Cambridge Systematics and proprietary data, 2010



Beltsville Site



Cultural Resources - *Beltsville*



Community Features - *Beltsville*



What's Next



★ Current phase of project development



QUESTIONS

