

Public Works Retrofits



Public Works New BMPs

The rebuilt Takoma Park Public Works facility was designed and constructed with environmental awareness. The Administration building was designed to achieve LEED Certified status but may qualify for Silver. One of the programs is a gray water system for use in toilets and exterior hose bibs. This is the collection system which is supposed to capture 95% of roof runoff which will be stored in a 5,000 gal. tank. All of the runoff from pavement within the yard passes through a hydrocarbon filter prior discharge offsite.



Double duty traffic calming.



Effective



Parking Lot Retrofit



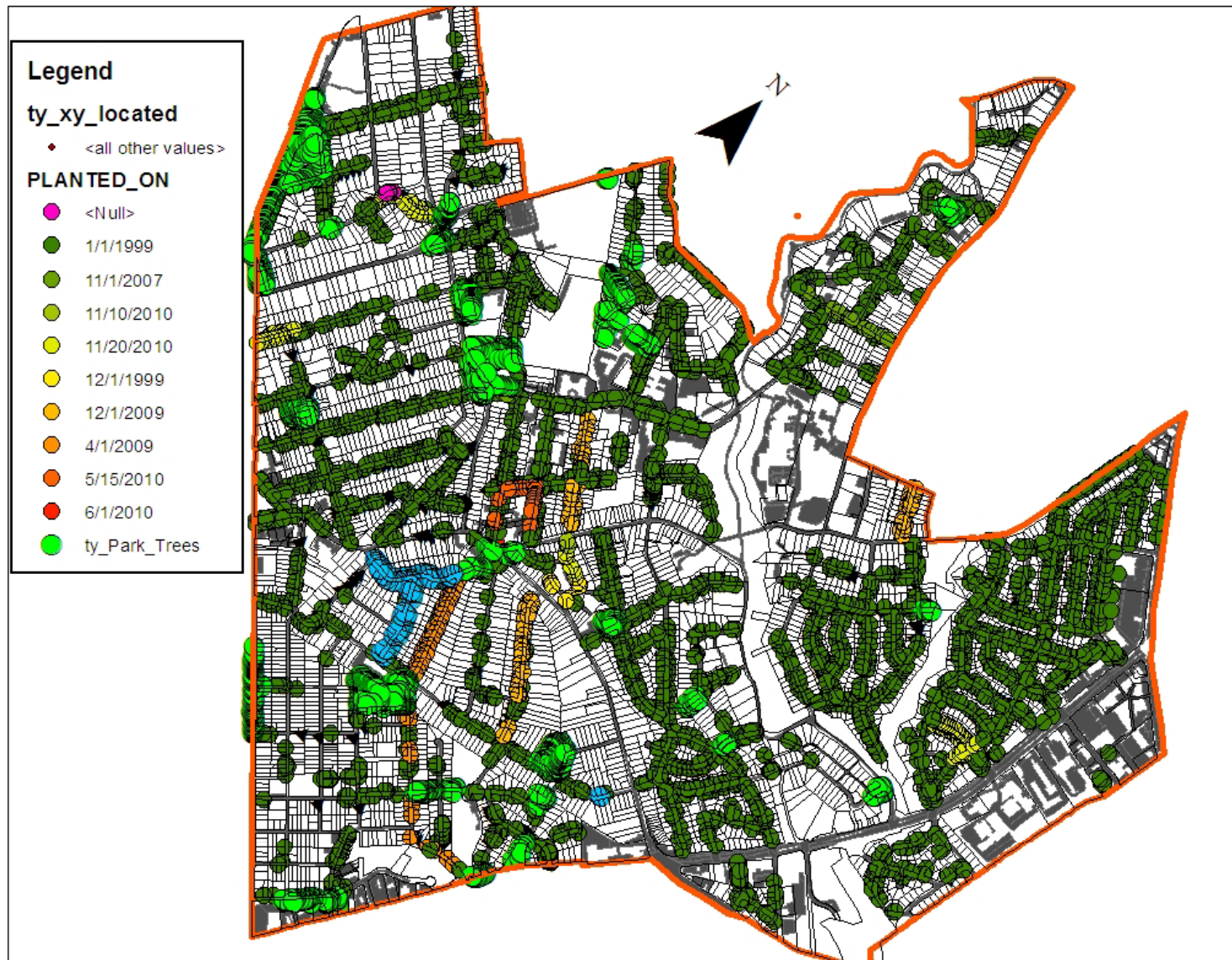
Parking Lot Retrofit



Yesterday



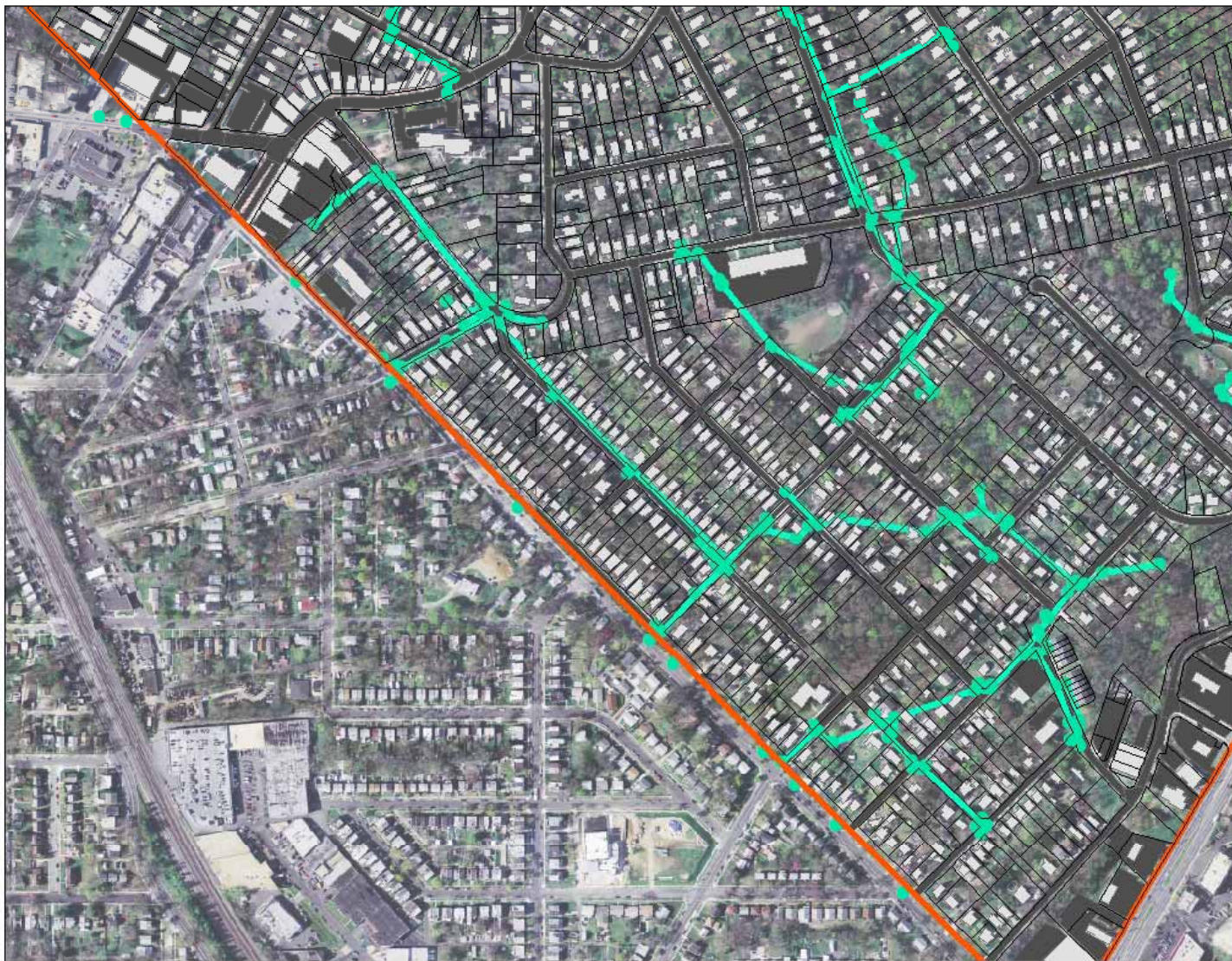
Inventory and Planting



Bang for the buck.



Land Use.



Discharge Point.

