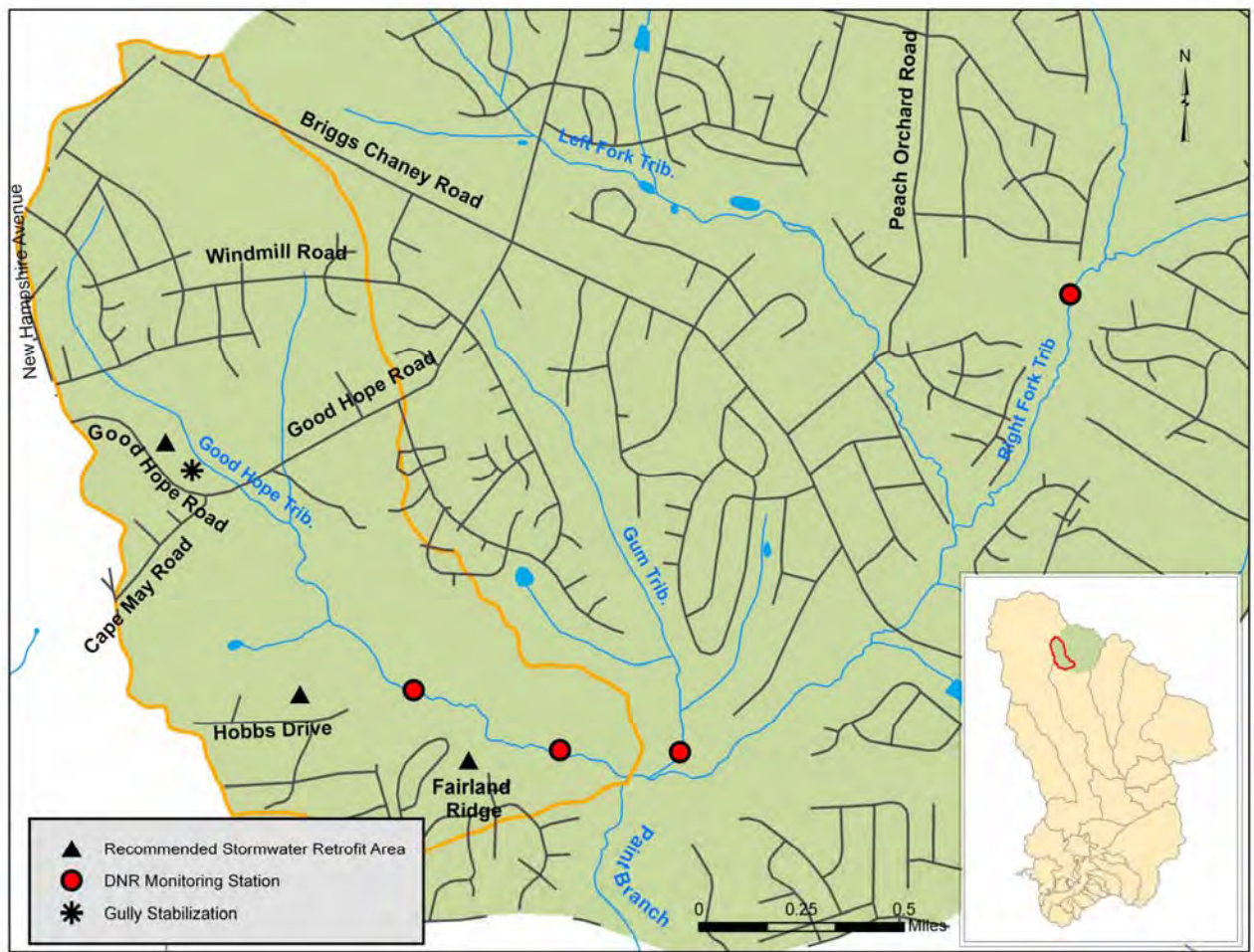




Paint Branch Annual Assessment

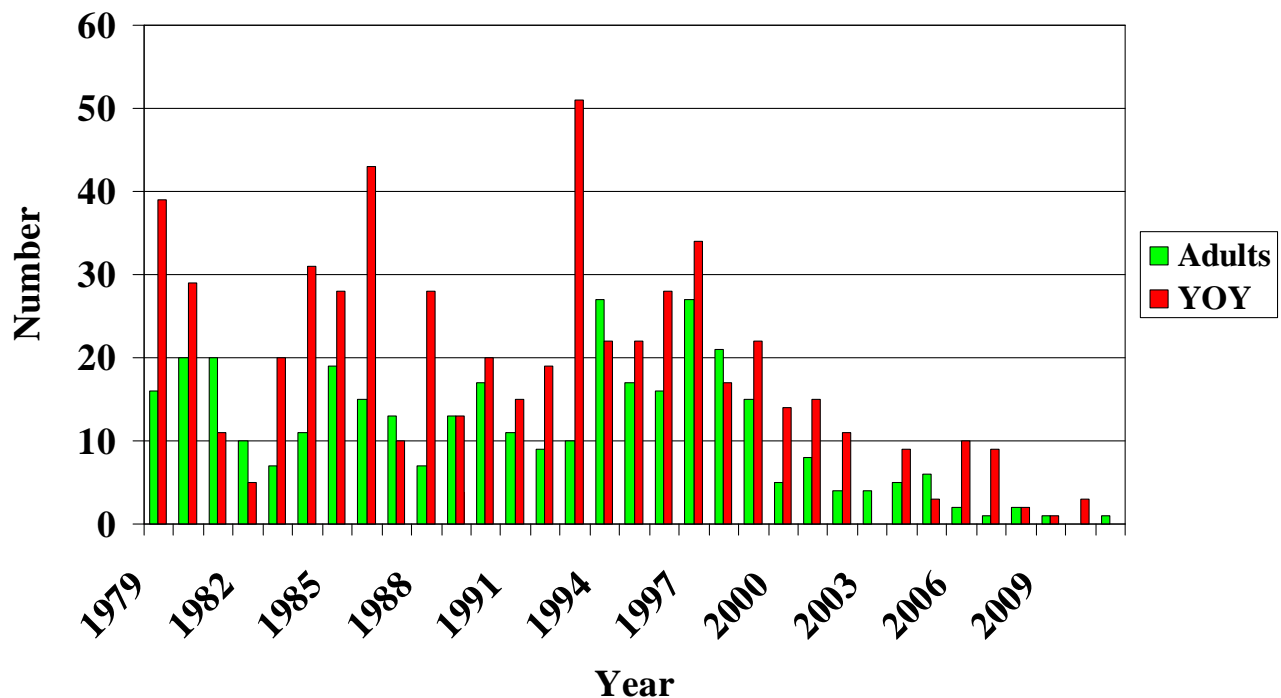
Brown Trout Status for 2011
Good Hope Tributary



Adult Brown Trout Numbers For Good Hope Trib. (1979-2011)

- No adult trout were collected in 2010, which was the first time in the 33 year history of the survey at this station. Only one adult trout was collected in the 2011 trout survey.
- Data shows downward trend after 1999.
- Double digit performance through 1999, the exceptions; 1983(7); 1988(7); and 1992(9).
- The lowest numbers of adults ever observed, going back to 1979, occurred in the twelve year period between 2000 and 2011 (exception 2001 (8)).

Estimated number of brown trout collected by MD DNR in the Good Hope Tributary at Hobbs Drive from 1979 - 2011



Yoy Brown Trout Numbers For Good Hope Trib. (1979-2011)

- Numbers show double digit performance through 2002; exception 1982(5).
- No yoy were observed in 2003 and 2011.
- Single digit numbers were observed every year between the years of 2004 and 2011, with the only exceptions being 2006 (10) and (0) collected in 2011.

Good Hope Tributary Fall Redd Count of 2011

- MDDNR has conducted annual fall redd counts along 0.9 miles of Good Hope Tributary since 1978.
- A total of fourteen (14) redds were counted in 2006, (8) in 2007, (9) in 2008, (5) in 2009, (3) in 2010 and (5) in 2011. Each count included two visits each year.
- A successful trout hatch was confirmed during the spring of 2010 along the entire length of Good Hope Tributary below Hobbs Drive, and immediately above the mouth of Gum Springs Tributary.
- Trout fry were observed in Good Hope Tributary on April 7, 2011, thereby confirming hatching and emergence success.
- Redd counts are influenced by weather events between counts in a given year, as well as the total effort, reflected by the number of return visits to count redds.